



# LONSPEARE

EST. 1983

# COMPANY PROFILE



## Specialist Cable Suppliers

WE ARE THE CABLE SPECIALISTS – THE RIGHT SOLUTION, THE RIGHT TIME, EVERYTIME.



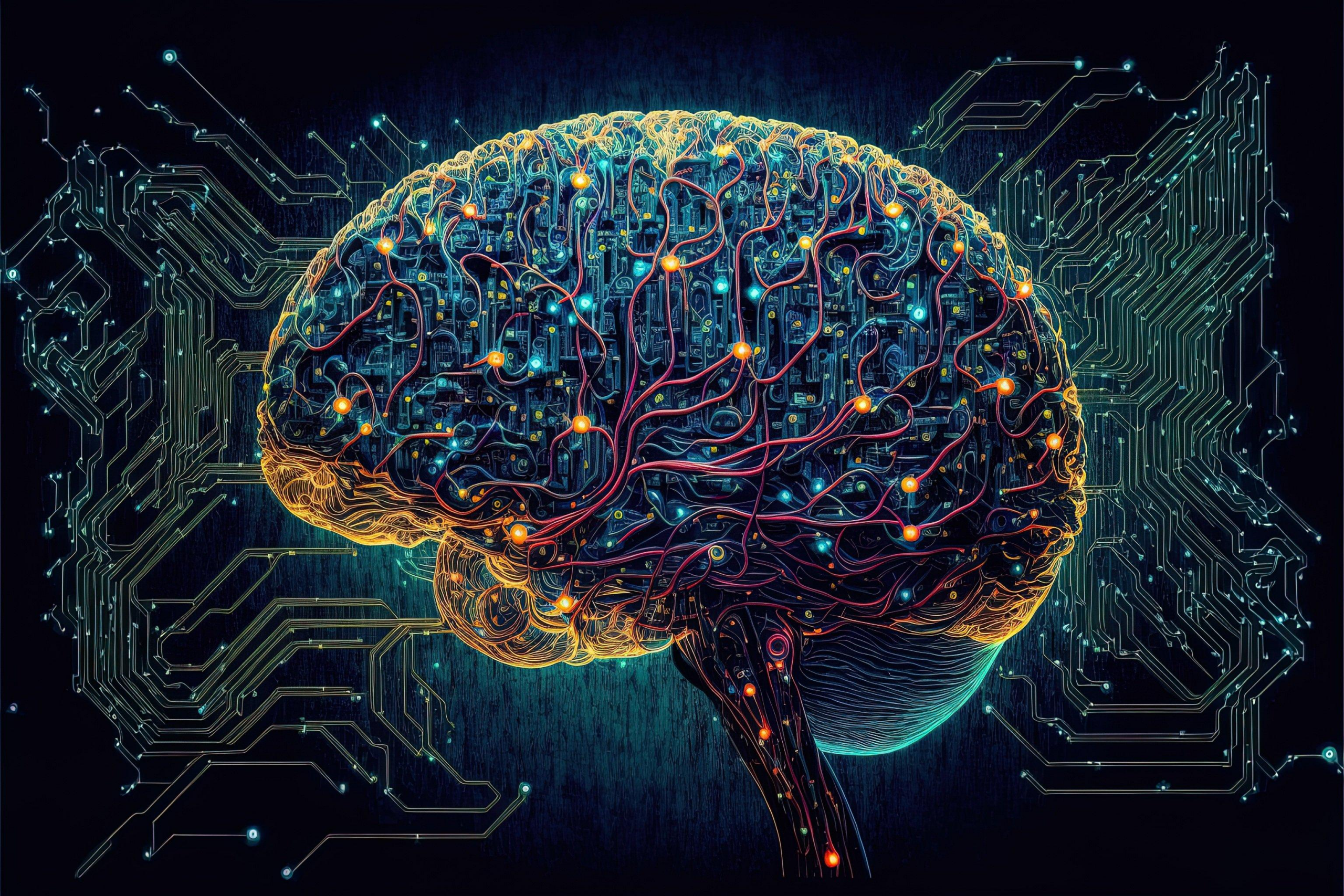
## About us

Established in 1983, **Lonspeare SA (Pty) Ltd** brings over four decades of expertise in the supply of high-quality instrumentation, control, power, data, fibre, and communication cables.

Through consistent growth and a strong reputation in the South African market, we relocated to larger premises in 1999 to better serve our expanding customer base.

In 2014, **Lonspeare KZN (Pty) Ltd** was established to more effectively service the coastal regions.



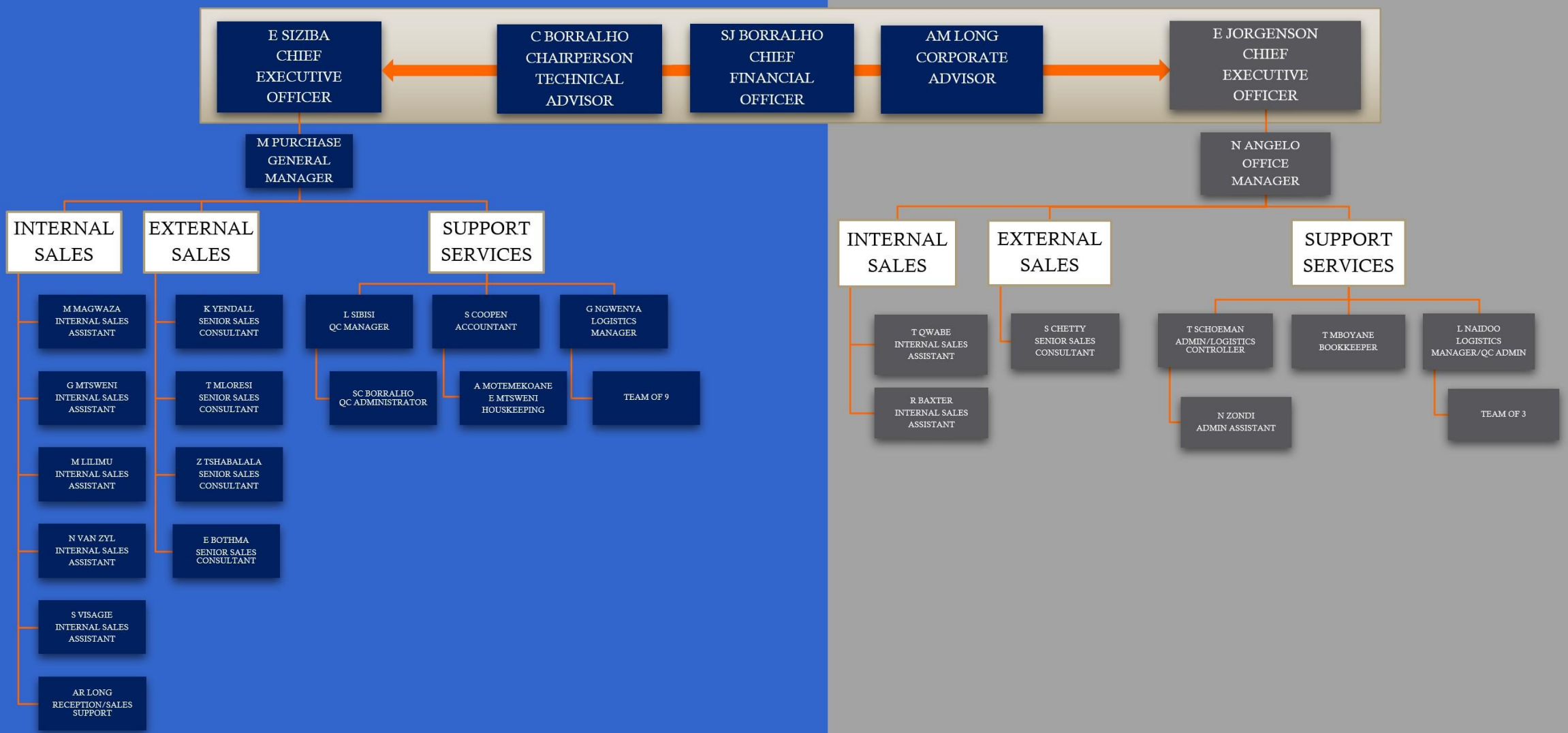


# Our Team



## Lonspeare SA (Pty) Ltd.

## Lonspeare KZN (Pty) Ltd.



# What we do

Our **core focus** is the solution driven distribution of instrumentation, control, power, data, fibre, and communication cables, serving a diverse range of sectors.



CONSTRUCTION



CEMENT



SECURITY & CCTV



BEVERAGES INDUSTRY



OIL



GAS



MOTOR INDUSTRY



METALS INDUSTRY



AEROSPACE



PORTS & HARBOURS



RAILWAYS



AIRPORTS



POWER INDUSTRY



MANUFACTURING



TELECOMMUNICATIONS & IT



PAPER & PULP



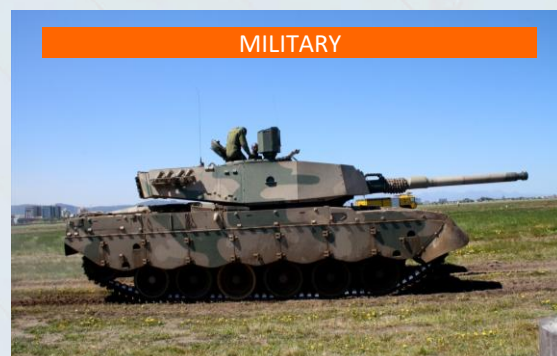
FOOD INDUSTRY



MINING



RENEWABLE ENERGY



MILITARY

# Where we operate

We distribute extensively throughout the **Southern African Development Community (SADC)** region.



# How we operate

Lonspeare Group has a highly experienced and trained technical sales team, dedicated to delivering customised cable solutions.

Through strategic global sourcing and established distribution partnerships, we offer an **extensive range of specialised cables** tailored to meet diverse customer requirements.

The **Lonspeare Group** maintains an extensive inventory of control and instrumentation cables at our **Gauteng** and **KwaZulu-Natal** warehouses, allowing us to meet urgent requirements with minimal lead time.



# Our Ethos

## Vision Statement

To be the **preferred strategic supplier** in the control and instrumentation cable market.

## Mission Statement

### Quality in everything we do.

## Our Commitment

We are committed to **service excellence and innovation** now and into the future. We are proudly South African, a **level 1 B-BBEE** contributor and **ISO 9001:2015** certified.

## Product Guarantee

All our products come with a standard **(12) twelve-month** warranty. Extended warranties are available upon request.

# Certifications



**Broad-Based Black Economic Empowerment Verification Certificate**  
**Lonspeare SA (Pty) Ltd and Subsidiary**  
**Level 1 Contributor**

Registration number: 388100038/07  
 VAT number: 480003954  
 Incorporating the following entities: Refer to Annexure  
 Physical address: 3 Navel Street, Alberton North, Gauteng, 1449  
 Certificate number: M-13266-1021-C15

Scorecard:  
 Generic Enterprise – Amended Codes of Good Practice (Gazette no 36928 and 42496 (31 May 2019))  
 01 June 2024 – 31 May 2025

Financial period used:  
 BEE procurement recognition level: 133%  
 Empowering Supplier: Yes  
 Modified flow-through applied: No  
 Exclusion principle used: No  
 Discouraging principle applied: No  
 Participated in E.E.S. initiative: No  
 Achieved 1.5 x E.E.S. target and 2.5% Absorption: No  
 Achieved 1.5 x E.E.S. target and 5% Absorption: No

| Scorecard Information               | Target Score  | Score         |
|-------------------------------------|---------------|---------------|
| Ownership                           | 25.00         | 25.00         |
| Management Control                  | 19.00         | 11.25         |
| Skills Development                  | 20.00         | 16.50         |
| Enterprise and Supplier Development | 42.00         | 43.53         |
| Spice Economic Development          | 5.00          | 5.00          |
| <b>Overall Score</b>                | <b>111.00</b> | <b>101.79</b> |

Black Ownership: 51.00%  
 Black Female Ownership: 40.19%  
 Black Designated Group: 19.74%  
 Black Youth: 14.50%  
 Black Disabled: 4.64%  
 Black Unemployed: 0.00%  
 Black People living in Rural areas: 5.18%  
 Black Military Veterans: 0.00%  
 Black New Entrant: 51.00%

Lonspeare SA (Pty) Ltd and Subsidiary has been independently verified in accordance with the Codes of Good Practice, issued in terms of section 9(1) of the Broad Based Black Economic Empowerment Act 53 of 2003 as amended per Act 46 of 2013 (Gazette 37271 of January 2014). This Broad-Based BEE Verification Certificate is based on information provided to Magna BEE Ratings (Pty) Ltd, a SANAS accredited BEE Verification agency.

**sanas**  
 B-BBEE Rating Agency

Date of issue: 21 October 2023  
 Expiry date: 20 October 2026  
 Period of validity: 12 months

**sanas**  
 B-BBEE Rating Agency

**BEE VERIFICATION ANNEXURE CERTIFICATE**

Certificate number: M-13266-1021-C15  
 Scorecard: Generic Enterprise – Amended Codes of Good Practice (Gazette no 36928 and 42496 (31 May 2019))

This Certificate incorporates the following entity:

| Name of Entity:         | Registration Number: | Vat Number: |
|-------------------------|----------------------|-------------|
| Lonspeare KZN (Pty) Ltd | 2014/077186/07       | 4430267601  |

**MAGNA BEE Ratings**

**sanas**  
 B-BBEE Rating Agency

Date of issue: 21 October 2023  
 Expiry date: 20 October 2026  
 Period of validity: 12 months

**sanas**  
 B-BBEE Rating Agency

Certificate ZA17/209954  
 The management system of  
**Lonspeare SA (Pty) Ltd**

3 Navel Street, Alberton North, Gauteng, 1449, South Africa  
 has been assessed and certified as meeting the requirements of  
**ISO 9001:2015**

For the following activities:  
 The procurement and supply of control cable, instrumentation cable, fibre optical cable and accessories, data and video cable, telephone cable, security cable, specialized application cable and energy cable.

This certificate is valid from 27 October 2025 until 10 October 2027 and remains valid subject to satisfactory surveillance audits.  
 Issued & Certified since 10 October 2012  
 Certified activities performed by additional sites are listed on subsequent pages.

Authorized by:  
 Donna Brown Crookall  
 SGS South Africa (Pty) Ltd  
 Country Club Estate, Building 3 21 Woodlands Drive, Woodmead, 2191, South Africa  
 t+27 (0)11 800 1000 - www.sgs.com

**sanas**  
 Quality Certification Body

**IAF**  
 International Accreditation Forum

Page 1/2

Certificate ZA17/209954, continued  
**Lonspeare SA (Pty) Ltd**

**ISO 9001:2015**  
 Issue 6

**Sites**

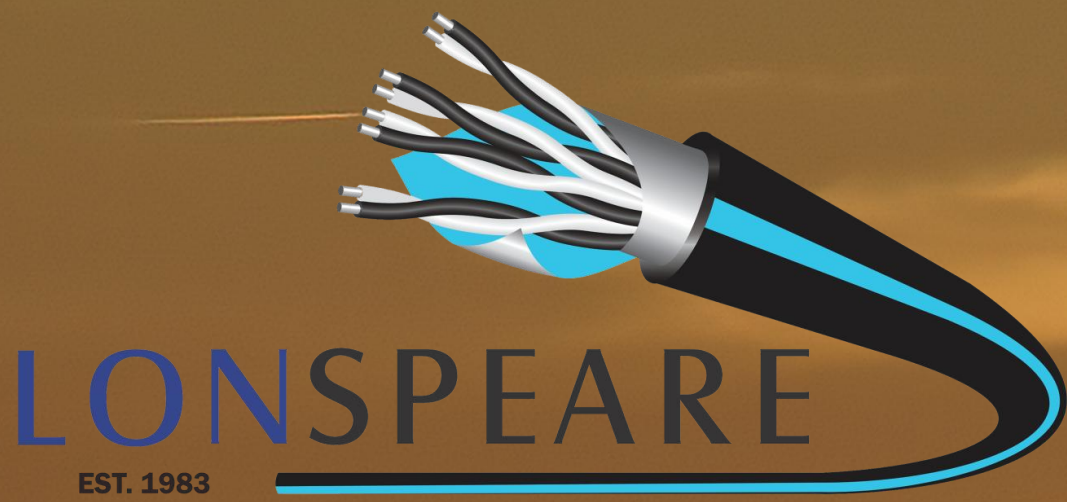
Lonspeare SA (Pty) Ltd  
 3 Navel Street, Alberton North, Gauteng, 1449, South Africa  
 The procurement and supply of control cable, instrumentation cable, fibre optical cable and accessories, data and video cable, telephone cable, security cable, specialized application cable and energy cable.

Lonspeare KZN (Pty) Ltd  
 Building 522, 1 Dikema Rd, Umhlangeni, eMalaheni, KwaZulu-Natal, 4003, South Africa  
 The procurement and supply of control cable, instrumentation cable, fibre optical cable and accessories, data and video cable, telephone cable, security cable, specialized application cable and energy cable.

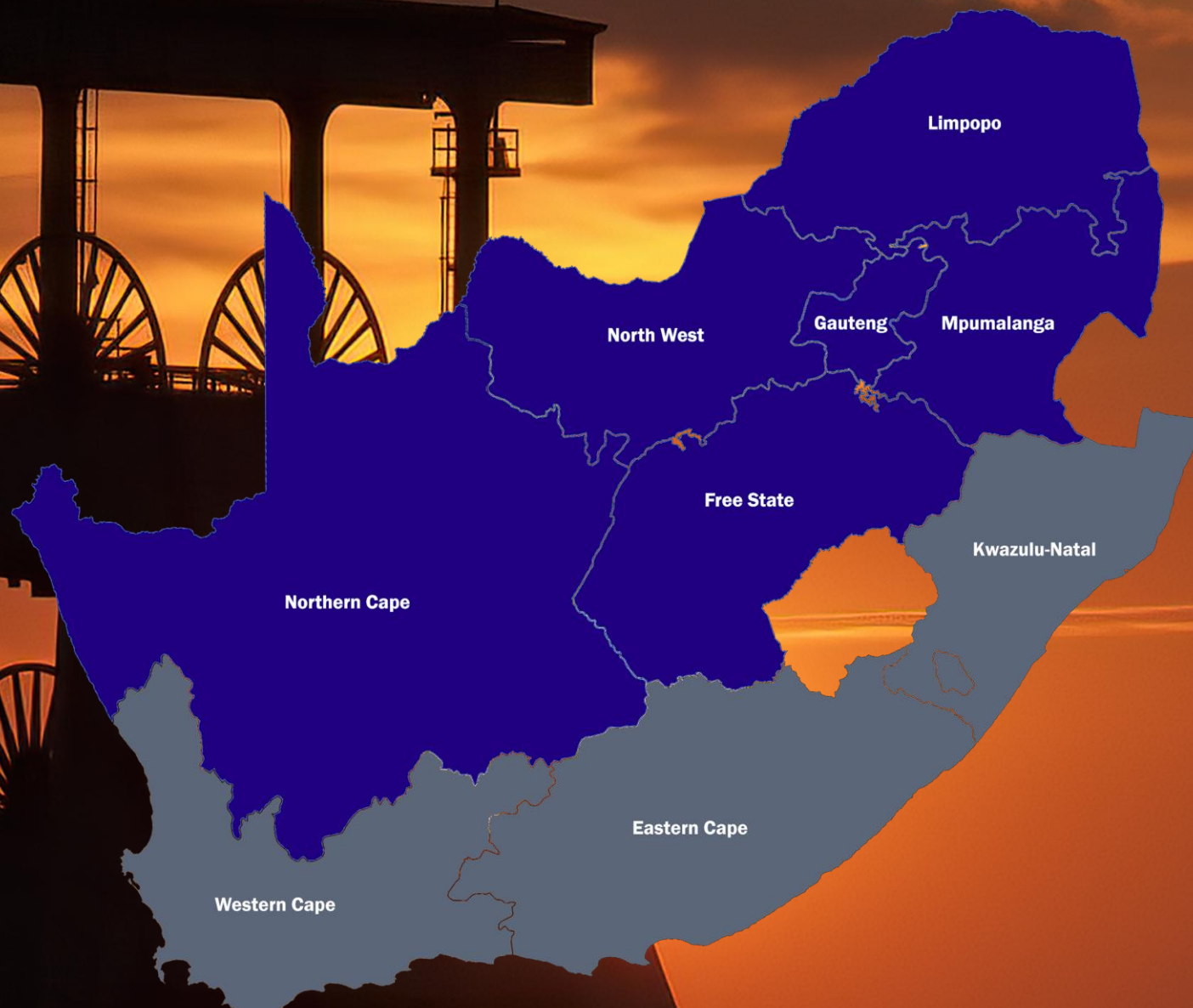
**sanas**  
 Quality Certification Body

**IAF**  
 International Accreditation Forum

Page 2/2



Lonspeare Group is South Africa's specialist cable supplier delivering precision-engineered specialised cable solutions to power energy, industry, transport, and telecoms infrastructure.



**Lonspeare SA (Pty) Ltd.**

1983/006336/07

Gauteng Office (Head Office)

3 Navvi Street, Alberton North,  
Ekurhuleni, Gauteng

[sales@lonspeare.co.za](mailto:sales@lonspeare.co.za)

+27 (0)11 907 0879

**Lonspeare KZN (Pty) Ltd.**

2014/077186/07

Kwa-Zulu Natal Office

1 Dickens Road,  
Umbogintwini

[sales@lonspearekzn.co.za](mailto:sales@lonspearekzn.co.za)

+27 (0)31 461 1302

WE ARE THE CABLE SPECIALISTS – THE RIGHT SOLUTION, THE RIGHT TIME, EVERYTIME.